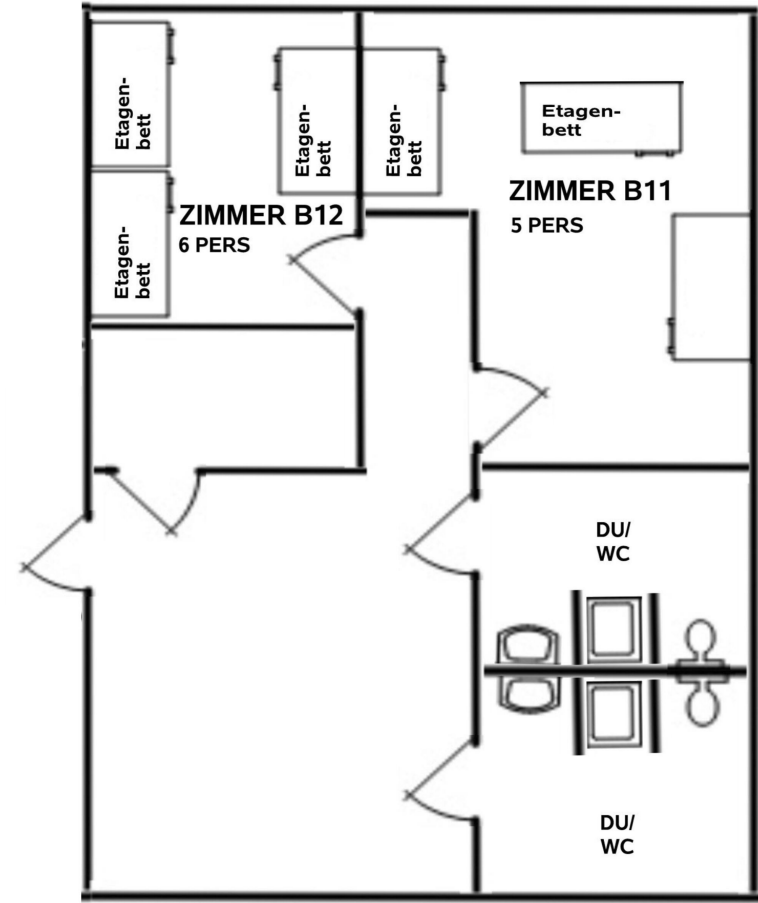
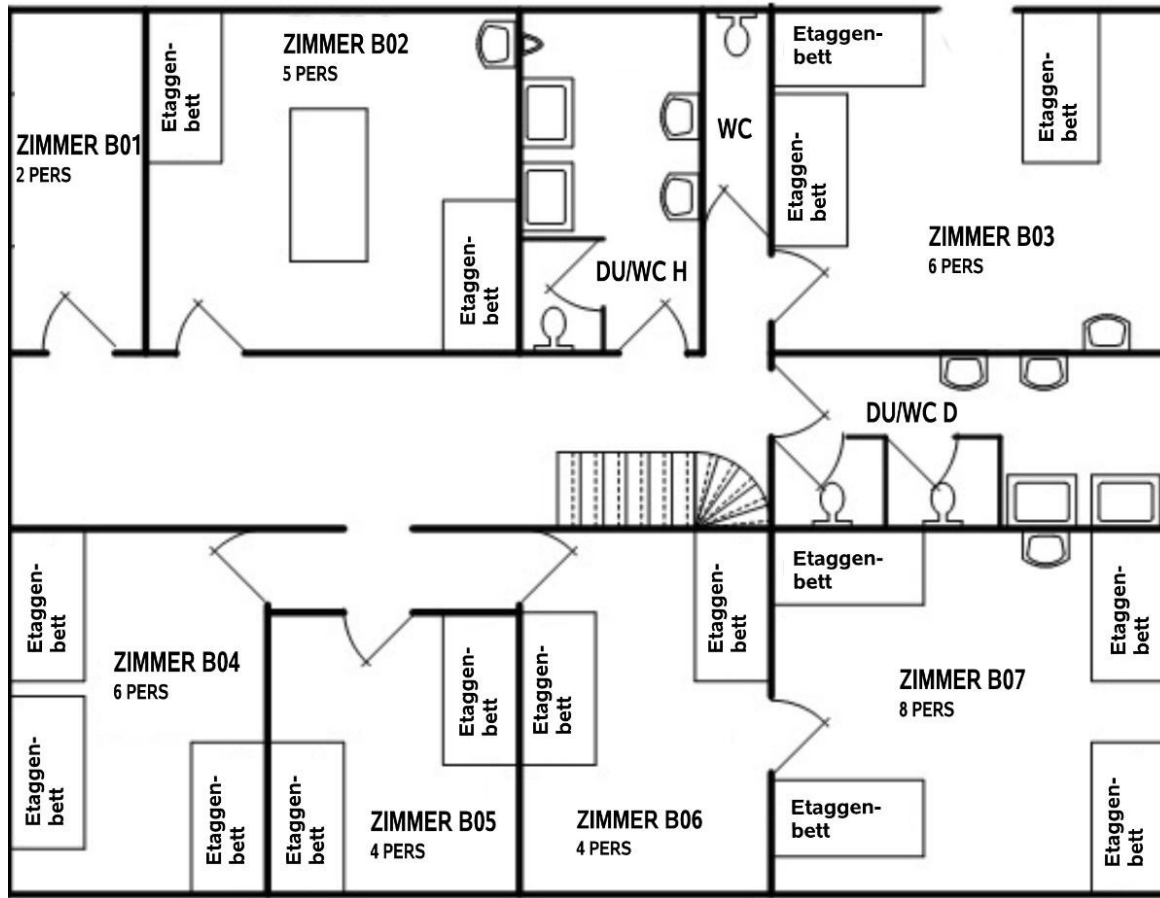


# Das Bauernhaus 1. OG

und

# 2. OG



1 x 2-Bettzimmer  
1 x 5-Bettzimmer  
1 x 8-Bettzimmer

2 x 4-Bettzimmer  
2 x 6-Bettzimmer

1. OG = 35 Betten

1 x 6-Bettzimmer  
1 x 5-Bettzimmer

2. OG = 11 Betten